



ALEDA

Products Catalog

Company Profile

In the light of professional experience and knowledge from 1996 until today, the medical devices factory Aleda, which was established in 2014, continues its activities more than 20 years of industry experience and expert staff, manufacturing arthroscopic, ancillary and trauma surgical products and implants manufactures and sells under its own brands as well as OEM and OBL. Aleda supplies its productions to both domestic and foreign markets with EC certificate, ISO13485:2016 quality certificates.

Our Vision We work with the awareness that human health is superior to everything else.

Our Mission In the era of rapidly developing technology, to support customers in line with quality, price and timely delivery criteria with solutions suitable for the sector.

Ti-Force Titanium Anchors



INDICATIONS

- 2.0mm anchors for hand surgery.
- 3.5mm anchors for Bankart and SLAP surgery.
- 5.0mm anchors for Rotator Cuff repair surgery.

SPECIFICATIONS

- 2.0mm anchors are loaded with 1pc. x USP # 2-0 UHMWPE suture 600mm length.
- 3.5mm - 5.0mm anchors are loaded with 2pcs. x USP # 2 UHMWPE sutures 900mm length.



Reference Code

Device Name

TFR0001

Ti-Force ANCHOR 2.0 MM

TFR0002

Ti-Force ANCHOR WITH NEEDLE 2.0 MM

TFR0005

Ti-Force ANCHOR 3.5 MM

TFR0006

Ti-Force ANCHOR WITH NEEDLE 3.5 MM

TFR0007

Ti-Force ANCHOR 5.0 MM

TFR0008

Ti-Force ANCHOR WITH NEEDLE 5.0 MM

Claw Full Thread Titanium Anchors



INDICATIONS

- 4.5mm - 5.5mm anchors for Rotator Cuff repair surgery.

SPECIFICATIONS

- 4.5mm, 5.5mm anchors are loaded with 2pcs. x USP # 2 UHMWPE sutures 900mm lenght .



Reference Code

Device Name

CF01450

Claw FULL THREAD TITANIUM ANCHOR 4.5 MM

CF01451

Claw FULL THREAD TITANIUM ANCHOR WITH NEEDLE 4.5 MM

CF01550

Claw FULL THREAD TITANIUM ANCHOR 5.5 MM

CF01551

Claw FULL THREAD TITANIUM ANCHOR WITH NEEDLE 5.5 MM

Curl Peek Suture Anchors



INDICATIONS

- 3.5mm anchors for PASTA lesion repair, Bankart repair and SLAP surgery.
- 5.5mm anchors for Rotator Cuff repair surgery.

SPECIFICATIONS

- 3.5mm,anchors are loaded with 1pc. x USP # 2 UHMWPE sutures 900mm lenght.
- 5.5mm anchors are loaded with 2pcs. x USP # 2 UHMWPE sutures 900mm lenght.



Reference Code

Device Name

CS02350

Curl PEEK SUTURE ANCHOR 5.5 MM

CS02351

Curl PEEK SUTURE ANCHOR WITH NEEDLE 5.5 MM

CS02550

Curl PEEK SUTURE ANCHOR 3.5 MM

CS02551

Curl PEEK SUTURE ANCHOR WITH NEEDLE 3.5 MM

Wolf Eye Peek Suture Anchors



INDICATIONS

- 3.5mm - 5.5mm anchors for Rotator Cuff repair surgery.

SPECIFICATIONS

- 3.5mm anchors are loaded with 1pc. x USP # 2 UHMWPE sutures 900mm length.
- 5.5mm anchors are loaded with 2pcs. x USP # 2 UHMWPE sutures 900mm length.



Reference Code

Device Name

WE03350

Wolf Eye PEEK SUTURE ANCHOR Ø3.5 MM

WE03351

Wolf Eye PEEK SUTURE ANCHOR WITH NEEDLE Ø3.5MM

WE03550

Wolf Eye PEEK SUTURE ANCHOR Ø5.5 MM

WE035511

Wolf Eye PEEK SUTURE ANCHOR WITH NEEDLE Ø5.5MM

Expert Knotless Peek Anchors



INDICATIONS

- 2.8 mm anchors for PASTA lesion surgery, Bankart and SLAP surgery.
- 3.5 mm anchors for Bankart and SLAP surgery.
- 4.5 mm, 5.0 mm, 5.5 mm anchors for Rotator Cuff repair surgery.

SPECIFICATIONS

- Anchor bodies are completely peek material.
- Anchors do not contain sutures. It is recommended to be used externally with ALED A brand USP #2 UHMWPE sutures.



Reference Code

Device Name

EK04280	Expert KNOTLESS PEEK ANCHOR 2.8 MM
EK04350	Expert KNOTLESS PEEK ANCHOR 3.5 MM
EK04450	Expert KNOTLESS PEEK ANCHOR 4.5 MM
EK04500	Expert KNOTLESS PEEK ANCHOR 5.0 MM
EK04550	Expert KNOTLESS PEEK ANCHOR 5.5 MM

Scorpeek Knotless Anchors

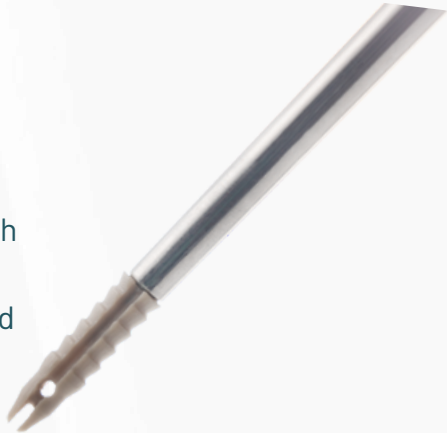


INDICATIONS

- 2.8mm anchors for PASTA lesion surgery, Bankart and SLAP surgery.
- 3.5mm anchors for Bankart and SLAP surgery.
- 4.5mm, 5.0mm, 5.5mm anchors for Rotator Cuff repair surgery.

SPECIFICATIONS

- Anchor bodies are completely composed of peek material with unique design.
- Anchors do not contain sutures. It is recommended to be used externally with ALED A brand USP #2 UHMWPE sutures.



Reference Code	Device Name
SC05280	Scorpeek KNOTLESS PEEK ANCHOR 2.8 MM
SC05350	Scorpeek KNOTLESS PEEK ANCHOR 3.5 MM
SC05450	Scorpeek KNOTLESS PEEK ANCHOR 4.5 MM
SC05500	Scorpeek KNOTLESS PEEK ANCHOR 5.0 MM
SC05550	Scorpeek KNOTLESS PEEK ANCHOR 5.5 MM

Spike Knotless Peek-Ti Anchors



INDICATIONS

- 4.5mm, 5.5mm anchors for Rotator Cuff repair surgery.

SPECIFICATIONS

- Anchor bodies are made of PEEK. The tip of Anchor bodies are made of Titanium.
- Anchors do not contain sutures. It is recommended to be used externally with ALED A brand USP #2 UHMWPE sutures.
- No need instruments for drilling.



Reference Code

Device Name

SP06450

Spike KNOTLESS PEEK-TI ANCHORS 4.5 MM

SP06550

Spike KNOTLESS PEEK-TI ANCHORS 5.5 MM

Spear Peek Knotless Anchors



INDICATIONS

- 2.9mm anchors for PASTA lesion surgery, Bankart and SLAP surgery.
- 3.5mm anchors for Bankart and SLAP surgery.
- 4.5mm, 5.5mm anchors for Rotator Cuff repair surgery.

SPECIFICATIONS

- Anchor bodies are completely composed of peek material.
- Anchors do not contain sutures. It is recommended to be used externally with ALED A brand USP #2 UHMWPE sutures.
- Sliding design.



Reference Code

Device Name

SPR0001

Spear PEEK KNOTLESS ANCHOR 2.9 MM

SPR0002

Spear PEEK KNOTLESS ANCHOR 3.5 MM

SPR0003

Spear PEEK KNOTLESS ANCHOR 4.5 MM

SPR0004

Spear PEEK KNOTLESS ANCHOR 5.5 MM

Bio-Force Soft Anchors



INDICATIONS

- 1.0mm, 1.5mm, 2.0mm anchors for hand surgery.
- 2.0mm, 3.0mm anchors for Bankart and SLAP surgery.
- 3.0mm anchors for Bankart, Rotator Cuff repair surgery.

SPECIFICATIONS

- 1.0mm, 1.5mm, anchors loaded with 1pc. x USP # 0 UHMWPE sutures 900mm length. 2.0mm, 3.0mm anchors are loaded with 2pcs. x USP # 2 UHMWPE sutures 900mm length.



Reference Code

Device Name

BFR0001

Bio-Force SOFT ANCHOR 1.0 MM

BFR0002

Bio-Force SOFT ANCHOR 1.5 MM

BFR0003

Bio-Force SOFT ANCHOR 2.0 MM

BFR0005

Bio-Force SOFT ANCHOR 3.0 MM

Talon Peek-Ti Knotless Anchor

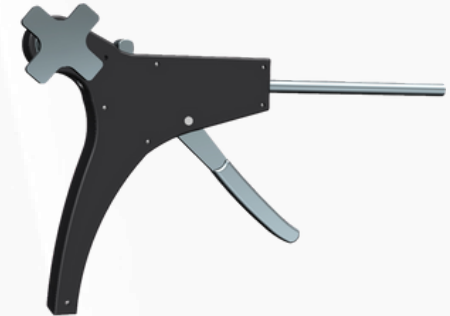


INDICATIONS

- 5.5mm Talon anchors for Rotator Cuff repair surgery.
- It is for especially osteoporotic patients.

SPECIFICATIONS

- 5.5mm Talon anchors.
- Anchors do not contain sutures. It is recommended to be used externally with ALED A brand Tape Sutures and USP #2 UHMWPE round sutures.



Reference Code

TLN0001

Device Name

Talon PEEK-Ti KNOTLESS ANCHOR 5.5 MM

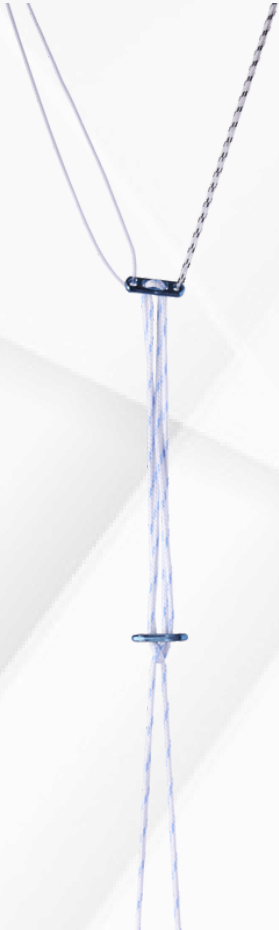
Acrobutton Lift Double Button

INDICATIONS

- Acromioclavicular joint dislocation repair surgery.

SPECIFICATIONS

- The Implant has 2 titanium buttons and loaded; for loop 1pc. x USP # 7 UHMWPE sutures with adjustable and self locking system.
- It is loaded with 1pc. x USP # 2 UHMWPE sutures 900mm lenght for pulling and flipping.



Reference Code

ADB1000

ADB2000

Device Name

Acrobutton LIFT DOUBLE BUTTON

Acrobutton LIFT TRIPLE BUTTON

ArthroWire UHMWPE Reinforced Sutures Nonabsorbable

SPECIFICATIONS

- ArthroWire USP # 2 and USP # 5 sutures are constructed of a multi-strand, long chain ultra-high molecular weight polyethylene (UHMWPE) core with a braided jacket of UHMWPE that gives ArthroWire sutures superior strength, soft feel and abrasion resistance that is unequaled in orthopedic surgery. Suture breakage during knot tying is virtually eliminated, which is especially critical during arthroscopic and standart surgical procedures.



Reference Code

Device Name

AW08200

ArthroWire UHMWPE Suture USP # 2 WITHOUT NEEDLE

AW08201

ArthroWire UHMWPE Suture USP # 2 WITH NEEDLE

AW08500

ArthroWire UHMWPE Suture USP # 5 WITHOUT NEEDLE

AW08501

ArthroWire UHMWPE Suture USP # 5 WITH NEEDLE

AW08000

ArthroWire UHMWPE Suture USP # 0 WITHOUT NEEDLE

AW08002

ArthroWire UHMWPE Suture USP # 2-0 WITHOUT NEEDLE

SuturePort Passers

INDICATIONS

- Rotator Cuff, Bankart and SLAP repair surgery.

SPECIFICATIONS

- Stainless steel cannula Ø2 mm.
- Nitinol wire with eyelet.
- Disposable.

Reference Code

SP09100

SP09200

SP09300

SP09400

Device Name

SuturePort PASS STRAIGHT

SuturePort PASS RIGHT

SuturePort PASS LEFT

SuturePort NITINOL WIRE with EYELET



HeroFix With Loop

INDICATIONS

- ACL-PCL surgery

SPECIFICATIONS

- The Implant has oblong in shape four holes single titanium button, 1pc. x USP #7 UHMWPE,suture with adjustable self locking system, also 2pcs. x USP #2 UHMWPE sutures for pulling and flipping. It is adjustable from lower side.

Reference Code

HF01010

Device Name

HeroFix WITH LOOP

SmartLift With Loop

INDICATIONS

- ACL-PCL surgery

SPECIFICATIONS

- The Implant has single titanium button, 1pc. x USP #7 UHMWPE, suture with adjustable self locking system, also 2pcs. x USP #2 UHMWPE sutures for pulling and flipping. It is adjustable from upper side. It is also available products with kind of Mega and Big Round Button.

Reference Code

SL01020

SL01030

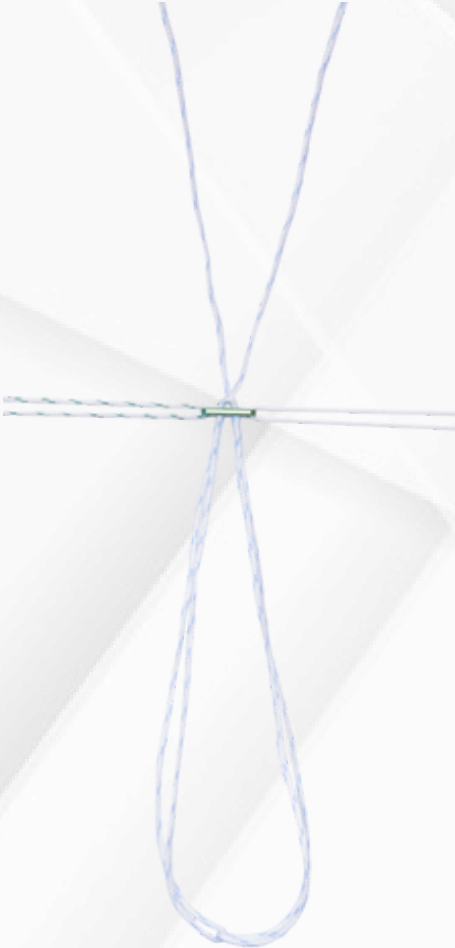
SL01040

Device Name

SmartLift WITH LOOP

SmartLift MEGA WITH LOOP

SmartLift ROUND WITH LOOP



Q Buttons

INDICATIONS

- ACL-PCL surgery.

SPECIFICATIONS

- The Implant has 2pcs. x USP #2 UHMWPE guidance sutures for pulling and flipping, also pre-sized continuous of UHMWPE suture loop loaded to oblong in shape single titanium button.



Reference Code	Device Name
QB01115	Q Button 15 MM
QB01120	Q Button 20 MM
QB01125	Q Button 25 MM
QB01130	Q Button 30 MM
QB01135	Q Button 35 MM
QB01140	Q Button 40 MM

Ridder Button



INDICATIONS

- ACL-PCL revision surgery.



SPECIFICATIONS

- Large and big wedged round titanium buttons fit every standart buttons in case of revision surgery.

Reference Code

RB01210

RB01220

RB01230

RB01240

Device Name

Ridder BUTTON

Ridder LARGE BUTTON

Ridder MEGA BUTTON

Ridder ROUND BUTTON



Force Crosspin ACL Fixation Device

INDICATIONS

- ACL surgery.

SPECIFICATIONS

- The Crosspin has cannulated body with threaded head.

Reference Code

Device Name

FRC 1194

Force CROSSPIN TITANIUM 40 MM

FRC 1195

Force CROSSPIN TITANIUM 45 MM

FRC 1196

Force CROSSPIN TITANIUM 50 MM

FRC 1197

Force CROSSPIN TITANIUM 55 MM

FRC 1198

Force CROSSPIN TITANIUM 60 MM

FRC 1783

Force 3,0 MM DIAMETER THREAD TROCAR PIN

FRC 1784

Force CALIBRATED THREAD TROCAR PIN

FRC 1787

Force FLEXIBLE NITINOL GUIDE WIRE



Peek-Force Interference Screw Types

Reference Code	Device Name
PFS0720	Peek-Force INTERFERENCE SCREW 7X20 MM
PFS0725	Peek-Force INTERFERENCE SCREW 7X25 MM
PFS0730	Peek-Force INTERFERENCE SCREW 7X30 MM
PFS0820	Peek-Force INTERFERENCE SCREW 8X20 MM
PFS0825	Peek-Force INTERFERENCE SCREW 8X25 MM
PFS0830	Peek-Force INTERFERENCE SCREW 8X30 MM
PFS0920	Peek-Force INTERFERENCE SCREW 9X20 MM
PFS0925	Peek-Force INTERFERENCE SCREW 9X25 MM
PFS0930	Peek-Force INTERFERENCE SCREW 9X30 MM
PFS1020	Peek-Force INTERFERENCE SCREW 10X20 MM
PFS1025	Peek-Force INTERFERENCE SCREW 10X25 MM
PFS1030	Peek-Force INTERFERENCE SCREW 10X30 MM
PFS1125	Peek-Force INTERFERENCE SCREW 11X25 MM
PFS1130	Peek-Force INTERFERENCE SCREW 11X30 MM
PFS1135	Peek-Force INTERFERENCE SCREW 11X35 MM
PFS1230	Peek-Force INTERFERENCE SCREW 12X30 MM
PFS1235	Peek-Force INTERFERENCE SCREW 12X35 MM



INDICATIONS

- ACL-PCL-MCL-LCL surgery.

SPECIFICATIONS

- Cannulated and soft thread.
- You can also order from the sizes 5x25 mm, 5x30 mm, 6x25 mm and 6x30 mm that are not in the table below.

T-Rex Interference Screw Types

Reference Code	Device Name
TRS0720	T-Rex TITANIUM INTERFERENCE SCREWS 7X20 MM
TRS0725	T-Rex TITANIUM INTERFERENCE SCREWS 7X25 MM
TRS0730	T-Rex TITANIUM INTERFERENCE SCREWS 7X30 MM
TRS0820	T-Rex TITANIUM INTERFERENCE SCREWS 8X20 MM
TRS0825	T-Rex TITANIUM INTERFERENCE SCREWS 8X25 MM
TRS0830	T-Rex TITANIUM INTERFERENCE SCREWS 8X30 MM
TRS0920	T-Rex TITANIUM INTERFERENCE SCREWS 9X20 MM
TRS0925	T-Rex TITANIUM INTERFERENCE SCREWS 9X25 MM
TRS0930	T-Rex TITANIUM INTERFERENCE SCREWS 9X30 MM
TRS1020	T-Rex TITANIUM INTERFERENCE SCREWS 10X20 MM
TRS1025	T-Rex TITANIUM INTERFERENCE SCREWS 10X25 MM
TRS1030	T-Rex TITANIUM INTERFERENCE SCREWS 10X30 MM
TRS1125	T-Rex TITANIUM INTERFERENCE SCREWS 11X25 MM
TRS1130	T-Rex TITANIUM INTERFERENCE SCREWS 11X30 MM
TRS1135	T-Rex TITANIUM INTERFERENCE SCREWS 11X35 MM



INDICATIONS

- ACL-PCL-MCL-LCL surgery.

SPECIFICATIONS

- Cannulated and soft thread.

Force Staple Titanium



INDICATIONS

- ACL-PCL-MCL-LCL surgery.

SPECIFICATIONS

- Inside spikes, sharpened teeth.



Reference Code

FRC1394

FRC1400

FRC1403

Device Name

Force STAPLE TITANIUM 8X20 MM

Force STAPLE TITANIUM 10X20 MM

Force STAPLE TITANIUM 11X20 MM

Mezopin

INDICATIONS

- Osteocondral lesion surgery.

SPECIFICATIONS

- Main body Ø1.25 mm nitinol, hammering head stainless steel.
- Depth of boring: 9mm.
- This product should be used with its applicator.

Reference Code

MZP1000

Device Name

Mezopin



Tactic Guide Pins

INDICATIONS

- ACL-PCL-MCL-LCL surgery.

SPECIFICATIONS

- Ø2.4 mm x 430 mm stainless steel with eyelet.



Reference Code

TGP1000

DGP1000

Device Name

Tactic TROCAR TYPE GUIDE PIN

Tactic DRILL TYPE GUIDE PIN

N-Force Nitinol Guide Pin



INDICATIONS

- ACL-PCL-MCL-LCL surgery.

SPECIFICATIONS

- Ø1.25mm x 300mm Nitinol not sharp tips. Laser marked. For guidance Interference screws.

Reference Code

NGP1000

Device Name

N-Force NITINOL GUIDE PIN

FireForce Monopolar RF Ablation Probes

INDICATIONS

- For Arthroscopic joint surgery;
(Knee joint, Shoulder joint, Ankle joint, Hip Joint) for cutting, shrinking, coagulations.

SPECIFICATIONS

- The Device works monopolar system with coated stainless steel probe's body for electrically insulated and It has ceramic ring. The Device Measurements of the device are Ø3.0mm x 165mm.
- These products; It works compatible with all brands cautery generators.



Reference Code

Device Name

MRF45AP

FireForce MONOPOLAR RADIOFREQUENCY (RF) ABLATION PROBES 45°

MRF90AP

FireForce MONOPOLAR RADIOFREQUENCY (RF) ABLATION PROBES 90°

MRF180AP

FireForce MONOPOLAR RADIOFREQUENCY (RF) ABLATION PROBES 180°

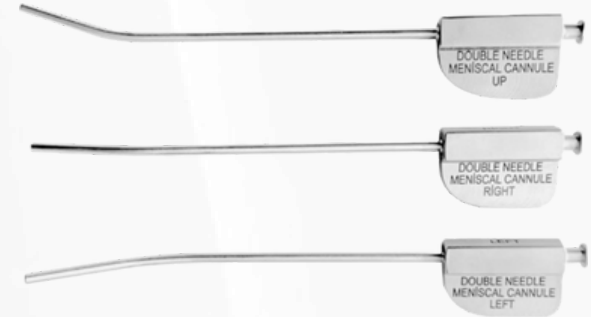
Advisor Double Needle Suture

INDICATIONS

- Meniscal tears repairing.

SPECIFICATIONS

- 2pcs. x Stainless steel needles is $\varnothing 0.8$ mm x 240 mm attached with USP # 0 UHMWPE suture. It is recommended for these products to be used with surgical instruments with cannulas straight, right, left angled.



Reference Code

ADS1000

Device Name

Advisor DOUBLE NEEDLE SUTURE

EsFix and Sniper Meniscal Repair System



INDICATIONS

- Meniscal tears repairing.

SPECIFICATIONS

- Meniscal Repair Systems with automatic mechanism are special designed with 2pc. PEEK Implants and with USP # 2/0 UHMWPE self-locking tying suture system for "All Inside Arthroscopic Meniscal Repair Techniques".



Reference Code

Device Name

ESFX2600	EsFix MENISCAL REPAIR SYSTEM STRAIGHT
ESFX2601	EsFix MENISCAL REPAIR SYSTEM RIGHT
ESFX2602	EsFix MENISCAL REPAIR SYSTEM LEFT
SMS1000	Sniper MENISCAL REPAIR SYSTEM STRAIGHT
SMS1001	Sniper MENISCAL REPAIR SYSTEM RIGHT
SMS1002	Sniper MENISCAL REPAIR SYSTEM LEFT

Disposable Arthroscopy Trocar Cannula

Reference Code	Device Name
DATC6570	Disposable Arthroscopy Trocar Cannula 6.5 X 70 MM
DATC6590	Disposable Arthroscopy Trocar Cannula 6.5 X 90 MM
DATC8570	Disposable Arthroscopy Trocar Cannula 8.5 X 70 MM
DATC8590	Disposable Arthroscopy Trocar Cannula 8.5 X 90 MM



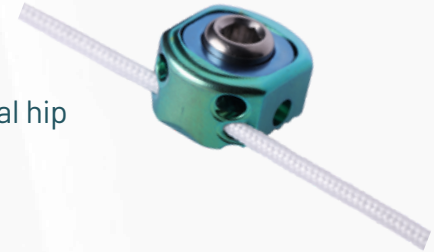
Hug Titanium Locking Cerclage Elastic Cable System

INDICATIONS

- For Upper and lower extremities fractures and general orthopedic trauma surgery, especially Femur (including periprosthetic fractures), prophylactic banding during total hip joint procedures.

SPECIFICATIONS

- It's unique design of bone surface side of the titanium part, It allows to periosteal blood circulation for increasing fast bone healing and fix to excellent and safe cable locking system thanks to the compression plate on the titanium body and this way, the cable is not damaged by the screw. Elastic cable diamentions are 1.5mm diameter x 1000mm lenght made by very strong core braided UHMWPE sutures. Titanium body diamentions are 6mm height, 11mm width, 13mm lenght. Fit with all brands trauma plates and their transverse cannals.



Reference Code

HUG1000

Device Name

Hug TITANIUM LOCKING CERCLAGE ELASTIC CABLE SYSTEM

Crosspes Screws

INDICATIONS

- Severe pronation.
- Calcaneal valgus deformity.
- Talus in plantarflexion.
- Failed correction with long-term orthotic treatment.
- Congenital and painful flat foot deformity.
- Treatment of tarsal unions.
- Subtalar instability.
- Posterior tibial tendon dysfunction.
- Paralytic flat foot deformity.

SPECIFICATIONS

- Titanium, cannulated.
- Inside holes for osteointegration.
- Talus designed to prevent normal subtalar joint movement.

Reference Code	Device Name
CRSP70	Crosspes SCREW Ø7 MM
CRSP80	Crosspes SCREW Ø8 MM
CRSP90	Crosspes SCREW Ø9 MM
CRSP100	Crosspes SCREW Ø10 MM
CRSP110	Crosspes SCREW Ø11 MM
CRSP120	Crosspes SCREW Ø12 MM



SyndoButton and HVButton

INDICATIONS

- Syndesmosis repair.

SPECIFICATIONS

- The Implant has an oblong in shape titanium button with four-holes and a round titanium button with two holes. The main body of adjustable with self locking system of the loop suture designed consist of #5 USP UHMWPE sutures. Also It has 1pc. USP #2 UHMWPE suture for pulling and flipping. The round button of the implant is fully compatible to the screw holes on trauma plate. Besides, It is suitable for use with or without trauma plates according to the surgical application techniques.

Reference Code

HVB1000

SYB1000

Device Name

HVButton

SyndoButton

